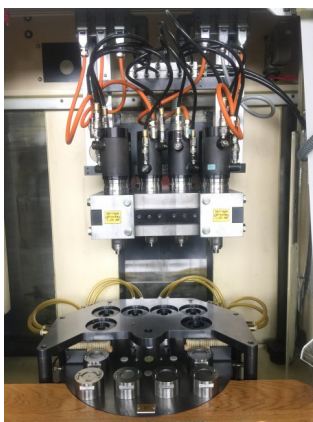


## WILLEMIN MACODEL W401

**Kind :** Vertical machining center  
**Brand :** WILLEMIN MACODEL  
**Model :** W401  
**Year :** 2001  
**Serial Nr:** 175  
**Stock Nr :** P1884



Machine specialized for engraving

### TECHNICAL DETAILS

- Number of axes : 3  
 MILLING SPINDLE : 6  
 - Spindle power : 0.27 [kVA]  
 - Spindle speeds : 30000 [rpm]  
 LINEAR AXES  
 - Travels on X/Y/Z axes : 250/200/300 [mm]  
 PALLET CHANGER  
 - Pallets number : 2  
 POWER SUPPLY  
 - Supply voltage : 400 [V]  
 WEIGHT & DIMENSIONS  
 - Machine floor space : 1500X1860 [mm]  
 - Machine height : 2100 [mm]  
 - Machine weight : 1700 [kg]  
 MACHINE HOURS  
 - Number of hours under power : 24234 [h]

### EQUIPMENT

- CNC : Num1050  
 - 3 colors status lamp